

NEW

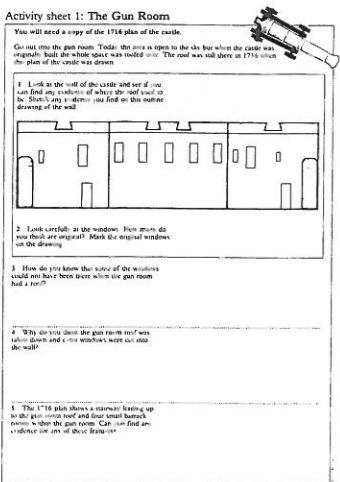
Portland Castle
Genevieve Wheatley

Portland Castle in Dorset was completed in 1540 as part of Henry VIII's defence of the realm against France and Spain. It is an excellent example of a castle built during this invasion scare and a visit to it can bring the drama of those events alive for pupils studying the Tudor period.

36 pages, A4, 1994
ISBN 1-85074-450-5

£3.95
Product code: XN 10583

NEW



Rochester Castle
Tim Copeland

Rochester Castle, Kent, is one of the finest examples of a Norman castle in the country. Discovery of its design and purpose can involve learning skills such as observation, recording, deduction, measuring, estimating and language.

36 pages, A4, 1990
ISBN 1-85074-217-0

£3.95
Product code: XN 13049

St Augustine's Abbey, Canterbury
Stephen Scoffham

St Augustine's, built AD598, is the oldest Anglo-Saxon abbey in England. The handbook includes nine trail

sheets, ideas for data collection; extracts from original documents, a time chart and reconstruction drawings.

48 pages, A4, 1988
ISBN 1-85074-196-4

£3.95
Product code: XN 13050

NEW

St Briavels Castle
Robin Clutterbuck

The castle of St Briavels, now a Youth Hostel, stands high above the River Wye looking west towards the Black Mountains and Wales. It is an important example of the evolution of castle architecture, as well as an illustration of the civil and military importance of castles in the Middle Ages.

36 pages, A4, 1994
ISBN 1-85074-320-7

£2.95
Product code: XN 10083

St Catherine's Oratory
Elizabeth Newbery

Based on the site overlooking Blackgang Chine on the Isle of Wight, which was built in the early fourteenth century as a chapel-cum-lighthouse, the handbook also covers a history of lighthouses in general, and ideas to relate them to the English and science curriculum.

12 pages, A4, plus 2 activity sheets, 1987

ISBN 1-85074-147-6
£2.95

Product code: XN 13051

The Thames and its Buildings

Adrian Tinniswood

Marble Hill House, The Chapter House Westminster Abbey, the Jewel Tower, London Wall, Winchester Palace and Hadleigh Castle are all covered in this pack for classes studying the Thames. A photographic trail, a DIY guidebook and a landscape survey are just some of the lively ideas for planning work.

48 pages, A4, 1990
ISBN 1-85074-282-0

£4.95
Product code: XN 13433

Tilbury Fort
Frankie Dale

Tilbury Fort is the best preserved and in many ways the

finest surviving example of late seventeenth-century military architecture in England. It offers a good introduction to a study of fortifications and its dramatic pentagonal design could stimulate a variety of cross-curricular activities.

36 pages, A4, 1989
ISBN 1-85074-216-2

£3.95
Product code: XN 13052

See also Posters

Totnes Castle

Stewart Brown and Robin Clutterbuck

This handbook includes plans of how to make a Norman motte and a set of cards for a role play activity 'Murder in the Castle'. It includes two interacting site trails for 'Normans' and 'Saxons' and an archaeological survey sheet.

28 pages, A4, plus 3 activity booklets, 1988

ISBN 1-85074-200-6
£3.95

Product code: XN 13250
See also Discovery Packs

Upton Castle

Hariet Blanchard, Linda Edwards and Christine Lloyd

Upton castle, still almost intact, is a sixteenth-century fort built to defend the naval dockyards at Chatham. After the embarrassment of the Dutch raid up the Medway in 1667 it was turned into the largest gunpowder store in England.

36 pages, A4, 1991
ISBN 1-85074-287-1

£3.95
Product code: XN 10562

Yarmouth Castle

Elizabeth Newbery

Yarmouth Castle was built to defend the Isle of Wight following the French invasion of 1545. The handbook contains detailed information about sixteenth-century methods of attack and defence; a cut-out model; a survey sheet and an activity based on the theme of pirates.

12 pages, A4, plus 3 activity sheets, 1987

ISBN 1-85074-149-2
£2.95

Product code: XN 13053

Written primarily for adults visiting with children, these packs would be a useful resource for teachers planning a site visit. Each contains two activity cards encouraging observational skills and a wallchart with practical ideas to use in the classroom.

Audley End

Newbery and England

This palatial Jacobean house in Essex has considerable eighteenth-century interior design by Robert Adam, traced on the activity cards. The wallchart has a do-it-yourself family tree.

Suitability: Key Stages 1 & 2; 1989
ISBN 1-85074-218-9

£2.50
Product code: XO 13054
See also Teacher's Handbooks

Battle Abbey and The Battle of Hastings

Gail Durbin, Liz Hollinshed, Ross Jellicoe and Peter Stone

This pack encourages children to imagine themselves as either Saxon or Norman soldiers taking part in the battle and what it might have felt like; and to imagine life in the Abbey as either a novice monk or abbot. The wallchart shows how to make your own stained glass window or chainmail tunic and helmet.

Suitability: Key Stages 1 & 2; 1990

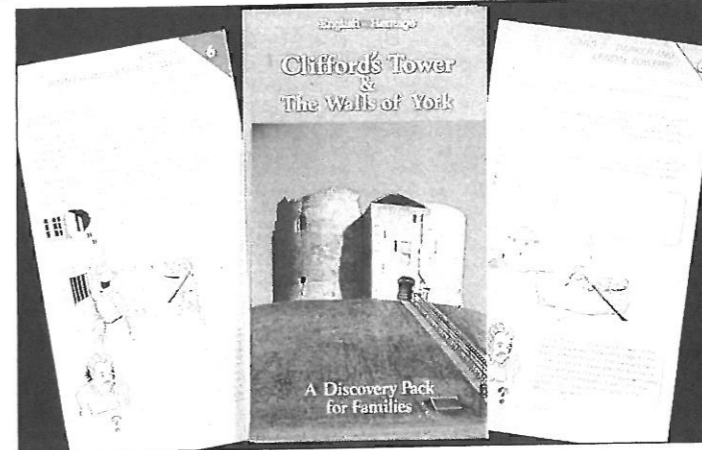
ISBN 1-85074-267-7
£2.50

Product code: XO 13434
See also Videos

Clifford Tower and York City Walls

Elizabeth Newbery

York has the most complete circuit of medieval city walls in England, about two miles in length and spanning nearly two thousand years of history. The two activity cards form a guided walk, asking questions and exploring the different stages in the development of the defences of the city and its motte and bailey castle, Clifford's Tower, as you go along. The wallchart forms a large illus-

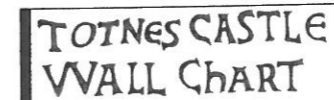


trated map with information on all the principal historic sites in York. The pack also contains a medieval recipe and shows how to make a pomander.

Suitability: Key Stages 1 & 2; 1992

ISBN 1-85074-324-X
£2.50

Product code: XO 12076



Totnes Castle

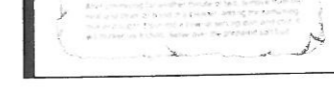
Elizabeth Newbery

This pack encourages children to imagine themselves as either Saxon or Norman soldiers taking part in the battle and what it might have felt like; and to imagine life in the Abbey as either a novice monk or abbot. The wallchart shows how to make your own stained glass window or chainmail tunic and helmet.

Suitability: Key Stages 1 & 2; 1990

ISBN 1-85074-267-7
£2.50

Product code: XO 13434
See also Videos



How to Make Chain Mail

Elizabeth Newbery

This pack encourages children to imagine themselves as either Saxon or Norman soldiers taking part in the battle and what it might have felt like; and to imagine life in the Abbey as either a novice monk or abbot. The wallchart shows how to make your own stained glass window or chainmail tunic and helmet.

Suitability: Key Stages 1 & 2; 1990

ISBN 1-85074-267-7
£2.50

Product code: XO 13434
See also Videos

at the physical evidence. The wallchart shows how to make decorative tiles, or your own quill and ink.

Suitability: Key Stages 1 & 2; 1987

ISBN 1-85074-171-1
£2.50

Product code: XO 13055
See also Videos

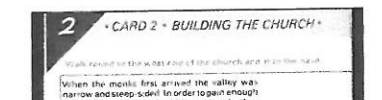
Tintagel Castle
Julie Reed

The remains of this medieval castle are spectacularly located on the Cornish coast. The wallchart includes ideas for designing heraldry, a recipe and a cartoon story of King Arthur and the sword, associated with Tintagel.

Suitability: Key Stages 1 & 2; 1991

ISBN 1-85074-322-3
£2.50

Product code: XO 10564



Kenilworth Castle

Gail Durbin, Liz Hollinshed, Ross Jellicoe and Peter Stone

The activities in this pack help children understand why changes were made to the castle in the past, and might be needed in the present to conserve the buildings. The wallchart shows how to make your own Elizabethan ruff, a decorated archway or design a patterned border.

Suitability: Key Stages 1 & 2; 1991

ISBN 1-85074-294-4
£2.50

Product code: XO 10563
See also Teacher's Handbooks, Videos and Posters

Rievaulx Abbey

Newbery and England

Rievaulx was the first major Cistercian monastery built in England. This pack looks at how the order was founded and the abbey built, looking

Totnes Castle

Stewart Brown and Robin Clutterbuck

This Devon Castle is an excellent example for studying Norman motte and bailey defences. The activity cards form two trails about the castle and life as a Saxon and Norman during the conquest. The wallchart contains ideas for making chainmail and a heraldic shield.

Suitability: Key Stages 1 & 2; 1989

ISBN 1-85074-284-7
£2.50

Product code: XO 13056
See also Teacher's Handbooks

Appetite for Change - Food and Cooking in Twentieth Century Britain
Gill Corbishley

This book looks at developments in British food from 1900 to the present day. Aspects of change from the days of horse-drawn vehicles making doorstep deliveries, cooks and kitchen maids, to the microwave age are investigated and reasons for change suggested. Developments in energy, transport and packaging and in the kitchen itself are traced through the century and illustrated by contemporary sources and recipes. 36 pages, A4, 1993 ISBN 1-85074-400-9 £5.95 Product code: XQ 10086



A Taste of History
Jane Renfrew, Maggie Black, Peter Brears, Jennifer Stead and Gill Corbishley

Five historians have collaborated to provide an authoritative survey of the history of British cooking from Prehistoric times to the twentieth century. The book includes over 90 recipes for the modern cook, from wartime austerity to a medieval curd flan. 352 pages, 200 illustrations, 1993 ISBN 0-7141-1732-3 £14.95 Product code: XQ 10315

Food and Cooking in Britain
Jane Renfrew, Maggie Black, Peter Brears and Jennifer Stead

A series of seven books containing information on food, cooking equipment, serving meals and etiquette, together with a collection of recipes converted for the modern kitchen. 44-52 pages, A5, 1985 The volumes are:

Food and Cooking in prehistoric Britain
ISBN 1-85074-079-8 £2.95 Product code: XQ 13060

Food and Cooking in Roman Britain
ISBN 1-85074-080-1 £2.95 Product code: XQ 13061

Food and Cooking in medieval Britain
ISBN 1-85074-081-X £2.95 Product code: XQ 13062

Food and Cooking in sixteenth-century Britain
ISBN 1-85074-082-8 £2.95 Product code: XQ 13063

Food and Cooking in seventeenth-century Britain
ISBN 1-85074-083-6 £2.95 Product code: XQ 13064

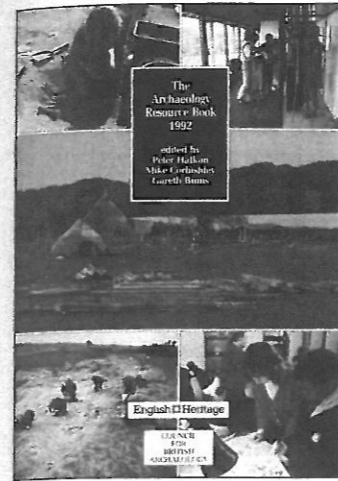


Ration Book Recipes - Some Food Facts 1939-1954
Gill Corbishley

The demands and restrictions of rationing in the 'austerity years' during and after the Second World War are still vivid memories for many people. This book is a summary of the facts about food and rationing, with noteworthy recipes and many illustrations from contemporary sources. There is a special section for teachers, presenting ideas for classroom projects and experiments together with suggestions for further reading. 36 pages, A4, 1990 ISBN 1-85074-288-X £4.95 Product code: XQ 13436

Food and Cooking in eighteenth-century Britain
ISBN 1-85074-084-4 £2.95 Product code: XQ 13065

Food and Cooking in nineteenth-century Britain
ISBN 1-85074-085-2 £2.95 Product code: XQ 13066



ISBN 1-872414-18-4 £6.00 Product code: XQ 12075

NEAB Archaeology resource books

A series of books for students of the Northern Examinations and Assessment Board's A and AS Levels in Archaeology, published jointly with English Heritage and the Council for British Archaeology. The volumes are:

Archaeological sources and Methods - A Reader
Compiled by Nicky Bignall Edited by David Austin

This book addresses the techniques, methods and theories used in the modern practice of archaeology and draws on references and quotations from a number of original sources and from books and articles written by archaeologists. Compiled as a reader for Part 1 of the examination syllabus, it would be an invaluable resource for anyone interested in evidence-based teaching. 134 pages, A4, 1993 ISBN 0-901628-98-0 £5.00 Product code: XQ 10318

Archaeological Themes
Part 2 of the examination syllabus is divided into five themes: Material culture and technology, Economics, Settlement, Social organisation, Religion and ritual. Each book is illustrated with line drawings and photographs and contains a bibliography. Books available so far are:

Prehistory
Brian Leigh Molyneux 47 pages, A4, 1993 ISBN 0-901628-97-2 £3.50 Product code: XQ 10319

Roman Period
Roger H White 52 pages, A4, 1993 ISBN 0-901628-96-4 £3.50 Product code: XQ 10320

Archaeology in the National Curriculum
Edited by Mike Corbishley

Artefacts and ancient monuments are essential parts of National Curriculum history at all the Key Stages. This book, written by a group of experts, presents a number of case studies and ideas to help teachers introduce archaeology into their curriculum work - Key Stage 1 Archaeology; History and Archaeology at Key Stages 2, 3 or 4; Archaeology and Geography and using archaeological sites and records for National Curriculum studies. Published jointly by English Heritage and the Council for British Archaeology. 16 pages, A4, 1992 ISBN 1-85074-385-1 £2.75 Product code: XQ 12074

The Archaeology Resource Book
Edited by Peter Halkon, Mike Corbishley and Gareth Binns

This book will be invaluable for anyone who wants to understand and study the past in England, Scotland and Wales. The book contains a list of resources for National Curriculum studies, information about school examinations, higher and continuing education and courses in archaeology. It also contains comprehensive lists of societies, museums, archaeological organisations, books, videos and computer software. Published jointly by English Heritage and the Council for British Archaeology. 160 pages, A4, 1992

A Change of Heart - English Architecture Since the War
Andrew Saint

This book celebrates the unsuspected wealth and range of fine architecture and design created in England's cities, towns and countryside in the thirty years after the Second World War. Published by the Royal Commission on the Historical Monuments of England, 1992 ISBN 1-873592-12-4 £2.50 Product code: XQ 10297 See also Videos



The English Civil War
Marilyn Tolhurst

This booklet explains the causes of the Civil War, what life was like for the ordinary soldier, and where the main battles took place. It contains many illustrations including life in an encampment; the weapons and armour of the fighting man, a useful map and quiz page. Suitability: Key Stages 2 & 3. 8 pages, A4, 1992 ISBN 1-85074-391-6 £1.50 Product code: XQ 12138

From Roman Viroconium to Medieval Wroxeter
Edited by Philip Barker

Wroxeter Roman City, near Shrewsbury in Shropshire, is one of the most important remnants of the Roman period in Britain. Originally a legionary fort, the town established on the same site was revived by the Emperor Hadrian when he visited the

province in AD 122. This book draws together a number of articles about the development of the city. Teachers will find the book useful for educational visits to the site. Published by West Mercian Archaeological Consultants Ltd, 1990, 13 pages text with 120 pages of figure illustration, A4 ringbound. ISBN 0-09516274-14 £4.75 Product code: XQ 10669

Life on a Royal Estate - a document pack for Osborne House
Marilyn Tolhurst

This document pack will help teachers prepare for and follow up a visit but it is also useful for teachers wanting to introduce a variety of historical sources. Archive photographs, old maps, and plans, an invoice for toys, an extract from the 1861 census, accounts from the royal nurseries, letters and diaries of Queen Victoria and her family are all included. Suitability: Key Stages 2 and 3; GCSE. 8 page book, A4, plus 39 sheets of facsimiles and transcriptions, 1986. ISBN 1-85074-126-3 £4.95 Product code: XN 13048 See also Teacher's Handbooks and Slide Packs

Planning and Conservation - a case study of Maiden Castle
Patrick Lavery and Chris Cooper

This booklet deals with the pressures and conflicting interests which inevitably arise from increased tourism and how these can be minimised by careful planning. Throughout there are exercises involving the students in group decision making and individual role play. Suitability: GCSE; A Level 28 pages, card covers, A4 size, 1988 ISBN 1-582-17356-6 £5.50 Published by Longman Product code: XQ 13067 See also Videos

These books are intended to help teachers planning a site visit. Historical background is combined with a variety of possible study approaches, documentary sources, and photocopiable activity sheets for classroom and on-site work, together with practical information about the site. The activities and ideas in all these books can be adapted for different Key Stages in the National Curriculum.

Appuldurcombe House
Elizabeth Newbery

Based on the now ruined eighteenth-century house near Wroxall on the Isle of Wight, the pack attempts to reconstruct life there when it was first built. There is a trail along public footpaths to look for the remains of Capability Brown's landscape gardens.

16 pages, A4, plus 2 trails and a cut-out, 1987
ISBN 1-85074-148-4

£2.95
Product code: XN 13043
See also Videos

Audley End House
Elizabeth Newbery

Audley End was built as a prodigy house, a sort of show house for accommodating royal visitors. Over the years different parts of it have been altered to conform to changing tastes, leaving a superb record of the predominant styles in interior design from the seventeenth to the nineteenth centuries. The park was laid out by Capability Brown.

36 pages, A4, 1993
ISBN 1-85074-311-8

£3.95
Product code: XN 10219
See also Discovery Packs

The Avebury Monuments
Lawrence Coupland

There is a stimulating range of material in this pack which covers Avebury Circles, West Kennet Long Barrow, The Sanctuary, Silbury Hill and West Kennet Avenue. A board game is also included.

20 pages, A4, 1988
ISBN 1-85074-173-5

£4.95

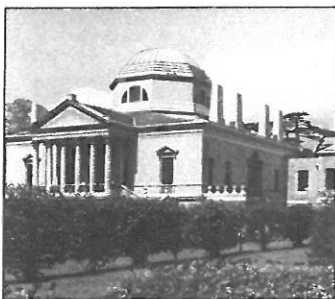
Product code: XN 13044
See also Videos

Carisbrooke Castle
Rosemary Cooper

This Isle of Wight castle dates from Norman times and is best known as the prison of Charles I in 1647-8. Following an historical introduction this book suggests five possible approaches to the castle including the use of evidence and a maths based exercise.

36 pages, A4, 1988
ISBN 1-85074-194-8

£3.95
Product code: XN 13045
See also Videos and Posters



Chiswick House
Susan Morris

Chiswick House in West London was built by the 3rd Earl of Burlington between 1727 and 1729. It set a fashionable new architectural style for the next hundred years, and the semi-rural grounds inspired some of the most admired landscaping in Europe. The house is an ideal site for art, maths, design and drama study as well as for history.

36 pages, A4, 1992
ISBN 1-85074-317-7

£3.95
Product code: XN 11501

Cleeve and Muchelney Abbeys
Sue Watling

Cleeve Abbey, Somerset is one of the best preserved Cistercian sites in the South West. Together with the remains of Benedictine Muchelney, the sites are representative of many other smallish monasteries, illustrating different but complementary aspects of monastic life.

48 pages, A4, 1989
ISBN 1-85074-238-3

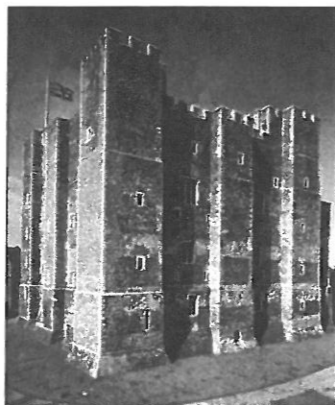
£3.95
Product code: XN 13046

Deal and Walmer Castles
Jonathan Barnes

These Kent castles are splendid examples of Tudor fortifications. Their symmetrical plans demonstrate many technological achievements and are a good basis for science and maths work. Walmer became the official residence of the Lord Warden of the Cinque ports, including the Duke of Wellington, and is a good place to begin a study of Victorian Britain.

36 pages, A4, 1992
ISBN 1-85074-360-6

£3.95
Product code: XN 11487
See also Posters



Dover Castle
Jonathan Barnes and Andy Harmsworth

Dover Castle, defined by an Iron Age hill-fort and graced by a Roman lighthouse and Saxon church, best displays the development of castle architecture in the twelfth and thirteenth centuries. However, it remained a garrison until the twentieth century and contains important examples of Georgian and Victorian military engineering.

48 pages, A4, 1991
ISBN 1-85074-304-5

£3.95
Product code: XN 10557
See also Videos and Posters

Framlingham and Orford Castles
John Fairclough

These Suffolk castles, both with substantial remains, can be studied as entities in themselves or used to illustrate a particular period, the locality or different types of fortification.

36 pages, A4, 1990

ISBN 1-85074-261-8

£3.95
Product code: XN 13430
See also Videos

Goodrich Castle
Ailsey Hancock

Goodrich exemplifies all the fascinating features of castles and castle life which most appeal to children, with its moat, towers, hall and dungeon. Activity sheets on Rebuilding, Attacking, Domestic Life and Cooking and Feasting could be used in the study of any castle.

36 pages, A4, 1991
ISBN 1-85074-310-X

£3.95
Product code: XN 10558
See also Videos

Hailes Abbey
David Aldred

This book is intended to help teachers planning a class visit to this thirteenth-century Cistercian abbey, surrounded by peace and tranquillity amongst attractive wooded pastureland in Gloucestershire.

36 pages, A4, 1993
ISBN 1-85074-396-7

£3.95
Product code: XN 10222

Helmsley Castle
Jane Hassid

This North Yorkshire castle offers diverse opportunities to study an ancient secular building, both as a medieval fortification and as a Tudor dwelling. Its evolution can be traced in the fabric of its walls and in documents written by its inhabitants.

36 pages, A4, 1991
ISBN 1-85074-323-1

£3.95
Product code: XN 10476

Kenilworth Castle
Tim Copeland

Kenilworth Castle, Warwickshire, was owned by some of the most powerful individuals in English history. The handbook focuses on the castle as fortress and palace, and the processes that caused its decay.

36 pages, A4, 1990
ISBN 1-85074-292-8

£3.95
Product code: XN 13432
See also Posters and Discovery Packs



Lullingstone Roman Villa
Iain Watson

Lullingstone in Kent is a classic example of a villa site in Britain, with fine mosaics. The handbook is relevant to the study of Roman Britain, the analysis of archaeological evidence and to schools studying leisure and tourism.

36 pages, A4, 1991
ISBN 1-85074-319-3

£3.95
Product code: XN 10477

Minster Lovell Hall
Pat Emery with Tony Hurley

Minster Lovell Hall, Oxfordshire, contains all the elements of a typical late medieval manor house, and the surrounding medieval village survives virtually intact.

16 pages, A4, 1990
ISBN 1-85074-290-1

£2.95
Product code: XN 13431

North Leigh Roman Villa
Tony Hurley

North Leigh Roman Villa lies on the south east margin of the Cotswolds, and excavation has shown it to have been one of the largest and wealthiest in the area. The handbook looks at trade in the Roman Empire and the nineteenth-century excavation.

16 pages, A4, 1991
ISBN 1-85074-316-9

£2.95
Product code: XN 10559

Okehampton Castle
Philippe Planel

The occupants and builders of Okehampton in the key periods of its history were the ruling elite of Devon. Baldwin de Brionne, Sheriff of Devon, held Okehampton in 1086 when the Domesday survey was carried out.

36 pages, A4, 1992
ISBN 1-85074-321-5

£3.95

Product code: XN 11488

Old Sarum
Philippe Planel

The massive banks and ditches of an Iron Age hill-fort surround the remains of a Norman castle and cathedral which were abandoned in the thirteenth century. As an educational tool for exploring continuity and discontinuity of settlement over a long period the site has few rivals.

36 pages, A4, 1991
ISBN 1-85074-308-8

£3.95
Product code: XN 10560

Osborne House
Marilyn Tolhurst

Based on Queen Victoria's seaside home on the Isle of Wight, this book suggests a number of approaches including role play, looking at the house as an example of Victorian social life and seeing it as a contemporary conservation problem.

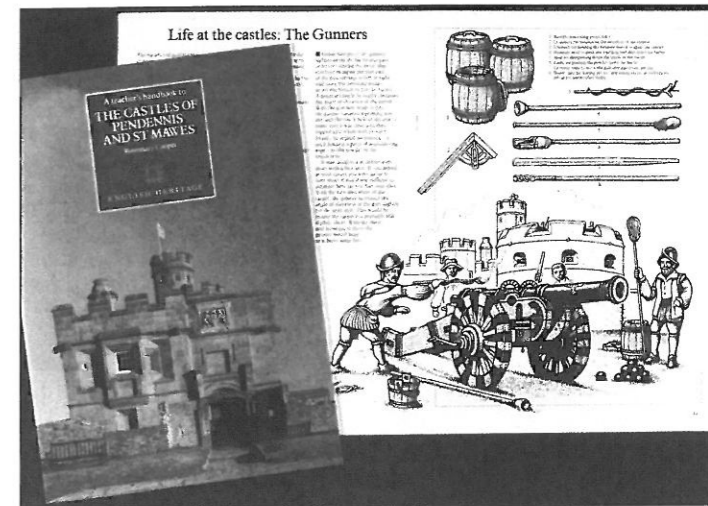
64 pages, A4, 2nd edition, extensively revised 1990
ISBN 1-85074-289-8

£4.95
Product code: XN 13047
See also Slide Packs and General Books



Pendennis and St Mawes Castles
Rosemary Cooper

These twin Cornish castles were built on the Fal estuary



by Henry VIII as coastal defences against France and Spain. Such was their strategic location that they retained a defensive role until the Second World War. The sites are excellent bases for a study of the development of coastal defence from the 1540s to the 1950s.

36 pages, A4, 1994
ISBN 1-85074-377-0

£3.95
Product code: XN 10081

Pevensey Castle
Dot Meades

This East Sussex castle offers a good opportunity to study defence over a long period of time. The medieval castle was built within the walls of a Roman fort. Building of the castle began in Norman times and additions have been made at periods as recently as the Second World War.

36 pages, A4, 1991
ISBN 1-85074-309-6

£3.95
Product code: XN 10561
See also Posters



Peveril Castle
Suzanne Spicer

Peveril Castle in Derbyshire stands high on a ridge surrounded by precipitous slopes which provide the most spectacular of natural defences, and it was one of the first castles to be constructed in stone. The keep, traces of domestic accommodation and some of the curtain walls remain, providing a straightforward, easy-to-understand layout of a typical small castle.

36 pages, A4, 1994
ISBN 1-85074-313-4

£3.95
Product code: XN 10223
See also Videos

